

# Hempland Primary School



Welcome to Year 1!



2020 - 2021

# Meet the Team



## Class 1 BC

Miss Burbidge -  
working Monday &  
Tuesday

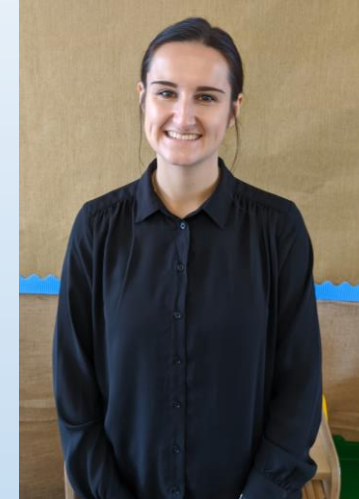
Mrs Caul - working  
Wednesday, Thursday  
& Friday



## Class 1 CB

Miss Brough

And Mrs Innes  
covers on a  
Wednesday



## Support Staff

Ms Beedie (and PPA cover)

Miss Bruin    Mrs Fenwick

Mrs Woolgar    Miss Bonnicci

Mrs Souch    Mrs Gaskell



# Life in Year 1



- Drop off – 8.30am – 9.00 am  
CB class- use the entrance near the Caddell Centre. BC class- use the classroom fire exit door.
- Pick up time – 2.45pm – 3.05pm. Both classes use their classroom fire exit doors.
- PPA is Wednesday pm – Mrs Innes and Mrs Caul/Ms Beedie will send children out at the end of the school day.
- Home-school communication – Please send any queries to the school email ([office@hempland.pmat.academy](mailto:office@hempland.pmat.academy)) and we will do our best to respond as soon as possible.
- PE days are **Tuesday** and **Wednesday**, your child will need both indoor and outdoor PE kits, clearly labelled with their name.
- Reading books – you will receive a new book on **Monday** and they will need to be brought back by Friday.
- 'Look and Listen' - we will start doing this on a Monday afternoon. Please feel free to email the office a photo that your child wishes to share, and we will endeavour to share them on the Monday. Year 1 life can be quite busy, so we ask for your understanding if photos aren't shared that week- we will share it later on in the week, or the following week/s.

# Curriculum & Topics



- Our topic this half term is ‘Great to be me!’ and we will be celebrating what our strengths are, working on trying our best in everything we do and learning all about our amazing bodies.
- We will be building on skills from Early Years and following the Early Years framework. Our learning environment is similar to Early Years and we now have weekly challenges for the children to do independently as well as a daily phonics session. In the afternoon, foundations subjects are taught; this half term our focus will be on Science, Art, Computing, PSHE, RE and PE. Later on in the term we will introduce guided maths, literacy and reading sessions in the morning alongside the areas of provision.
- We will be using the stories; The Colour Monster and The Colour Monster in School as a basis for some of our learning, as well as a whole host of other stories linking to emotions and feelings.
- Key dates: Parent’s Evening Phone calls later this half term.

# Expectations in Year 1



- Reading – please read as much as you can at home with your child, record any times you read with your child in their Reading Record. Encourage your child to read the books you have at home/from the library as well as their school books! 😊
- Handwriting- we will be continuing to teach the cursive style.
  - Spellings – Year 1 Common Exception Words (tricky words)
- Homework – half term packs and a weekly phonics homework.
  - In Year 1 we want our pupils to be happy, independent, confident, resilient learners who always try their best! We want them to have a real love for learning and exploring.

If you have any other questions please contact the office and we will be happy to answer them!



Thanks for reading/listening,

The Year 1 team 😊