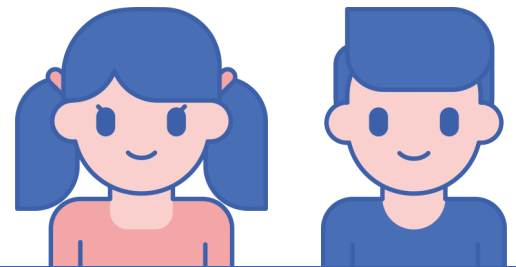


KEEPING OUR SCHOOLS SAFE



How we are ensuring the safety and welfare of our school communities



Pathfinder
Multi Academy Trust

The School Day



The start and finish times of the school day will be staggered to avoid large groups of parents and children gathering near school. Children will only attend school for two days a week to begin with.



The government is advising people to avoid using public transport where possible, especially at peak times. You should walk or cycle to school or come by car if necessary.



Children should only bring a packed lunch to school if they are not having a school lunch or they receive a free school meal. Our schools can only accept online payments for school dinners

Hygiene



Children will wash their hands as soon as they arrive at school and before leaving. They will also wash them more frequently throughout the day. There will be additional hand washing stations in each school.



Hand sanitisers, tissues and lidded waste bins will be in every classroom. Children will be instructed to use a tissue if they cough or sneeze. All classrooms will be kept well ventilated throughout the day.

Uniform and Equipment



Children are not expected to wear school uniform. We recommended that you wash any clothes worn at school as frequently as possible.



Children must not bring any bags or equipment to school. All stationery and resources will be provided.

Social Distancing



Children will be kept in small groups (bubbles) when in school. Each bubble will be a maximum of 15 children and 3 members of staff. Bubbles will be kept separate at all times, including break and lunch times and social distancing within bubbles will be observed.

Cleaning



All schools have updated their cleaning regime to include regular daily cleaning of high use areas, such as, table tops, door handles and railings.



All classrooms will have a supply of cleaning products. Stocks will be closely monitored and replenished frequently.



Deep cleaning in all schools will take place on a Wednesday, Friday and Saturday. Equipment will be sterilised each evening where appropriate.

What if a child becomes unwell with coronavirus like symptoms at school?



We have procedures in place for dealing with potential coronavirus cases within our schools. Parents will be contacted and asked to collect their child immediately.

Coronavirus Testing



All staff, pupils and family members in the same household will be eligible for testing if they develop coronavirus symptoms.

Personal Protective Equipment (PPE)



Our staff will have access to PPE, if required, when dealing with first aid or intimate care situations.

Coronavirus Symptoms



The main symptoms of coronavirus are:

- high temperature
- new, continuous cough
- loss or change to your sense of smell or taste

If your child or anyone in the household has these symptoms they must not come into school.

Online Learning



We will continue to provide online resources to support those children learning from home.